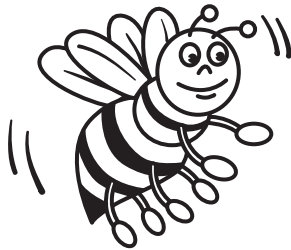


Name _____

Fold back the paper along the dotted line. Use the blanks to write each word as it is read aloud. When you finish the test, unfold the paper. Use the list at the right to correct any spelling mistakes.



- | | |
|----------------------------------|--------------|
| 1. _____ | 1. pale |
| 2. _____ | 2. face |
| 3. _____ | 3. crate |
| 4. _____ | 4. clay |
| 5. _____ | 5. stray |
| 6. _____ | 6. cane |
| 7. _____ | 7. slate |
| 8. _____ | 8. today |
| 9. _____ | 9. bail |
| 10. _____ | 10. rail |
| 11. _____ | 11. break |
| 12. _____ | 12. ache |
| 13. _____ | 13. drain |
| 14. _____ | 14. faint |
| 15. _____ | 15. flame |
| 16. _____ | 16. claim |
| 17. _____ | 17. steak |
| 18. _____ | 18. eight |
| 19. _____ | 19. mane |
| 20. _____ | 20. graze |
| Review Words 21. _____ | 21. grim |
| 22. _____ | 22. plum |
| 23. _____ | 23. cash |
| Challenge Words 24. _____ | 24. neighbor |
| 25. _____ | 25. railway |

Name _____

Using the Word Study Steps

1. LOOK at the word.
2. SAY the word aloud.
3. STUDY the letters in the word.
4. WRITE the word.
5. CHECK the word.
Did you spell the word right?
If not, go back to step 1.

ache	pale	slate	flame	steak
stray	today	drain	claim	break
eight	faint	crate	cane	mane
rail	clay	graze	bail	face

Rhymes

Circle the word in each row that rhymes with the word in column one.

1. take	tack	act	ache
2. play	plan	stray	any
3. tail	many	swan	pale
4. sale	rail	seal	slant
5. shame	near	name	claim
6. away	yawn	today	toy
7. paint	pain	pant	faint
8. hooray	clay	wait	swap
9. gate	strain	slate	stair
10. pain	drain	candle	shine
11. great	steak	crate	gear
12. maze	graze	said	daisy
13. name	nine	near	flame
14. aim	claim	beam	lamb
15. pane	cane	case	rant
16. pail	play	saint	bail
17. break	late	steak	leak
18. steak	break	seek	taste
19. cane	mane	grin	mean
20. pace	pale	camp	face

Name _____

ache	pale	slate	flame	steak
stray	today	drain	claim	break
eight	faint	crate	cane	mane
rail	clay	graze	bail	face

Write the spelling words with these spelling patterns.

Long *a* spelled *a_e*

1. _____
2. _____
3. _____
4. _____
5. _____
6. _____
7. _____
8. _____
9. _____

Long *a* spelled *ay*

15. _____
16. _____
17. _____

Long *a* spelled *igh*

18. _____

Long *a* spelled *ea*

19. _____
20. _____

Long *a* spelled *ai*

10. _____
11. _____
12. _____
13. _____
14. _____

Name _____

ache	pale	slate	flame	steak
stray	today	drain	claim	break
eight	faint	crate	cane	mane
rail	clay	graze	bail	face

A. It Takes Three**Write a spelling word that belongs with the other two words.**

1. cat, lost, _____
2. gray, stone, _____
3. limp, walk, _____
4. sore, muscles, _____
5. bright, fire, _____
6. yesterday, tomorrow, _____

B. What Does It Mean?**Write the spelling word that matches the meanings.**

7. what pottery is made of _____
8. two make a train track _____
9. this can be cooked on a grill _____
10. something to pack things in _____
11. buffalo eat this way in a field _____
12. where water goes down in a sink _____
13. one more than seven _____
14. fair-skinned _____

Name _____

A. There are six spelling mistakes in the letter. Circle the misspelled words. Write the words correctly on the lines below.

Dear Kaysha,

I bought a cactus at the plant sale. It lives in sandy soil, not in clai soil. I will keep it on my desk. I put a piece of slayte underneath it to protect the wood.

I don't have nearly as many plants as our nieghbor. She adopted a strai cat that pretends it's in the jungle. The cat even has a main like a lion. She put it in a crayte after it knocked one of the plants over.

Write soon!

Your friend,

Sally

1. _____

4. _____

2. _____

5. _____

3. _____

6. _____

B. Writing Activity

Write a travel advertisement describing a place you might visit. Use at least four spelling words in your description.

Name _____

Look at the words in each set below. One word in each set is spelled correctly. Use a pencil to fill in the circle next to the correct word. Before you begin, look at the sample set of words. Sample A has been done for you. Do Sample B by yourself. When you are sure you know what to do, you may go on with the rest of the page.

Sample A:

- (A) brayd
- (B) brid
- (C) brade
- (D) braid

Sample B:

- (E) gray
- (F) grai
- (G) greay
- (H) grae

- | | | | |
|--------------|---------------|---------------|---------------|
| 1. (A) aiche | 6. (E) todeay | 11. (A) crate | 16. (E) beal |
| (B) ake | (F) todae | (B) crait | (F) balle |
| (C) aike | (G) touday | (C) creat | (G) bail |
| (D) ache | (H) today | (D) crayt | (H) bal |
| 2. (E) strai | 7. (A) fante | 12. (E) graiz | 17. (A) stak |
| (F) strae | (B) fant | (F) graise | (B) steak |
| (G) stra | (C) faint | (G) grayze | (C) staik |
| (H) stray | (D) feant | (H) graze | (D) staek |
| 3. (A) eaght | 8. (E) cley | 13. (A) flame | 18. (E) braek |
| (B) aeght | (F) clay | (B) flaim | (F) braik |
| (C) eight | (G) clai | (C) flam | (G) break |
| (D) eigh | (H) cleay | (D) flaime | (H) brak |
| 4. (E) rail | 9. (A) slait | 14. (E) claem | 19. (A) mayn |
| (F) reale | (B) slate | (F) claim | (B) meane |
| (G) rael | (C) sleat | (G) cleam | (C) mainn |
| (H) rayl | (D) slayt | (H) claym | (D) mane |
| 5. (A) payl | 10. (E) drean | 15. (A) caen | 20. (E) face |
| (B) pel | (F) drain | (B) cane | (F) fayce |
| (C) pale | (G) drane | (C) kain | (G) faice |
| (D) paile | (H) dranne | (D) coan | (H) fac |